

MAIN FEATURES



5MP



2592 (H) × 1944 (V)



2.7 ~ 13.5mm (Motorized) H.FOV:
102 ~ 31°



45m IR Distance



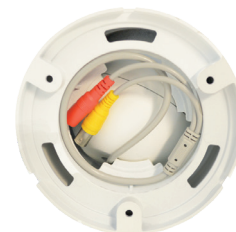
DWDR



IP66

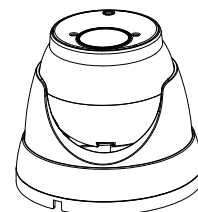
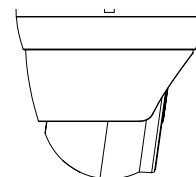
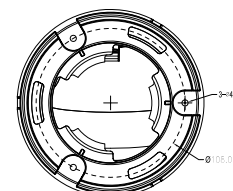
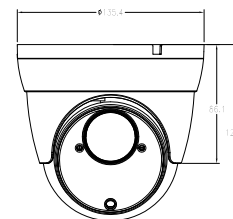


12v DC/PoE



Built-In Base

MODEL	SRDN5VFG
Imaging Device	1/2.7"
Effective Pixels	5MP 2592(H)×1944(V)
Scanning System	Progressive CMOS
Min. Illumination	Color 0.05lux @ F1.2(AGC ON) ; B/W 0 lux @ IR ON
Focal Length (Zoom Ratio)	2.7 ~ 13.5mm
Max. Aperture Ratio	F No. 1.83 (W) ~ 3.32(T)±5%
Angular Field of View	2.7 ~ 13.5mm (Motorized) H.FOV: 102 ~ 31°
Min. Object Distance	0.2M
Lens Type	Motorized
IR Viewable Length	Up to 45m
Camera Title	On/Off
Day & Night	IR cut filter with auto switch Day/Night/Auto/Schedule
Backlight Compensation	Off/On (5 Zone)
Wide Dynamic Range	DWDR
Digital Noise Reduction	3D DNR
Motion Detection	Off/On (8 Level)
Privacy Masking	Off/On (4 Zone, Rectangle)
Gain Control	Auto
White Balance	Auto/Manual/Indoor
Electronic Shutter Speed	1/5 ~ 1/20000s
Flip / Mirror	Flip/Rotation
On-Board Storage	Micro SD slot, up to 256GB
Alarm	1 input / 1 output
Audio	1 input / 1 output (RCA)
Hardware Reset	YES
Smart Feature	SMD
Ethernet	RJ45(10/100BASE-T)
Video Compression Format	H.265/H.264



MODEL	SRDN5VFG
Resolution	Mainstream 5MP(2592x1944),4MP(2592x1520) 3MP(2304x1296),1080P(1920x1080) ,720P(1280x720) Substream 720P(1280x720),VGA(640x480),QVGA(320x240)
Max. Framerate	50Hz: 20fps@5MP,25fps@4MP, 25fps@3MP/2MP/960P/720P 60Hz: 20fps@5MP,25fps@4MP, 30fps@3MP/2MP/960P/720P
Video Quality Ajustment	8Kbps ~ 8Mbps
Bitrate control method	CBR/VBR
Streaming Capability	Dual-Stream(Main/Sub)
IP	IPv4
Protocol	TCP/IP,HTTP,DHCP,DNS,DDNS,RTP/RTSP, SMTP,NTP,UPnP,SNMP,HTTPS,FTP
Security	IP address filter;complicated password;Authenticated username and password
Streaming Method	Unicast/Multicast
Max. User Access	Max 7 (admin+user)
Application Programming Interface	ONVIF(Profile S/G/T)
Web Viewer	IE8,9,10,11, Chrome 44/lower, Firefox 51/lower, Safari 11/lower
Operating Conditions	'-30~+55°C/less than ≤ 95% RH
Storage Conditions	'-30~+60°C/less than ≤ 95% RH
Ingress Protection	IP66
Input Voltage / Current	D12V/POE(IEEE802.3af)
Power Consumption	TBD
Color / Material	White/Metal
Dimension (WxHxD)	Ø135.6x127mm
Weight	TBD