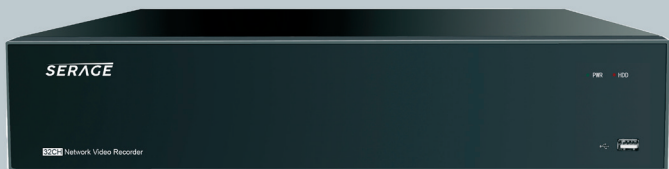


SERAGE

QUALITY RELIABILITY VISION



NON PoE



NDA (National Defense Authorization Act) compliant, refers to products that are "safe to use" by government agencies and enterprises.

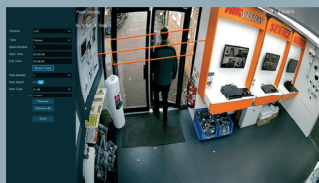
FEATURES



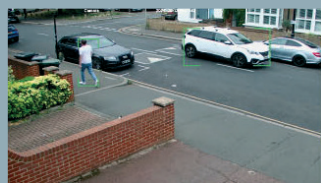
License Plate Detection



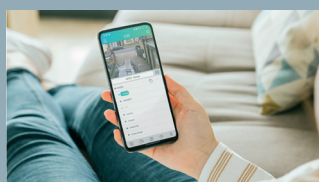
Crowd Density



People counting



Pedestrian & Vehicle Detection



APP Notifications



Face Recognition

SR9032N/4 32 CHANNEL NVR

Resolution	8MP, 5MP, 3MP, 2MP(1080P) 1.3MP(960P), 1.0MP(720P)
Inputs	256M
Out	128M
Compression	Audio: G.711A;G.711U Video : H.264/H.264+/H.265/H.265+
Frame rate	4K:60fps 4MP:120fps 2MP:240fps
AI	Yes
Event	MD(Sensitivity Level 1~8) Video loss Beep, Email, Push notification to Mobile APP
Playback function	Fast forward / backward (2x, 4x, 8x,16x) Slow forward (1/2x, 1/4x, 1/8x,1/16x)
Playback fisheye	Max 16CH playback Use WEB CMS,device does not support
Local	UI5.0
WEB	IE10/11 Safari V12.1 above Firefox V.52 above Google chrome V.57 above Edge V.79 above
Mobile viewer	Rxcamview
Push Notification	YES
P/W Reset	Factory Reset : Press 10 seconds
VGA	1 (1024*768, 1280*720, 1280*1024, 1440*900, 1920*1080)
HDMI 1	1 (1024*768, 1280*720, 1280*1024, 1440*900, 1920*1080, 3840*2160/EDID)
HDMI 2 (spot out)	1 (1024*768, 1280*720, 1280*1024, 1440*900,1920*1080) Async output
Ethernet	1 RJ45 100/1000 Base-T
USB	USB2.0*1(front), USB3.0*1+USB2.0*1(rear)
Audio out	1
E-sata	1
HDD	4 SATA , each HDD up to 10TB
Line in	1
RS485	1
Alarm Input/out	16 in /1 out
OSD Language	English/French/Spanish/Portuguese German/Italian/Greek/Danish/Finnish Russia/Hebrew/Turkish/Bulgarian/Arabic Korean/Japanese/ Thai/Hindi/Romanian Dutch/Polish
Dimension (WxDxH)	378*325.8*66mm
Input Voltage/Current	ATX280W
Power consumption (excluding hard disk)	12W
Operating Temperature	Temperature: -10°C~+50°C (14°F ~ 122°F)
Humidity	Humidity: Less than 90%RH