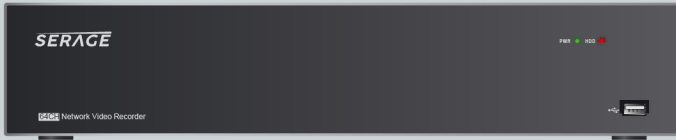
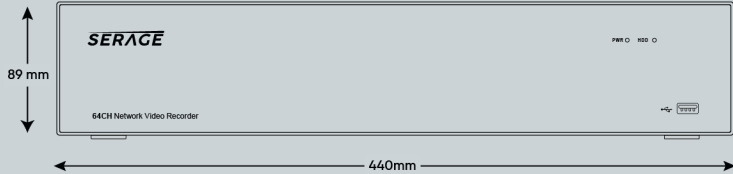


# SERAGE

QUALITY RELIABILITY VISION



## 64 CHANNEL NVR



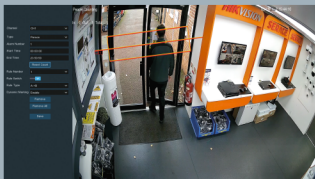
### AI FEATURES:



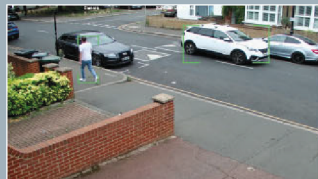
License Plate Detection



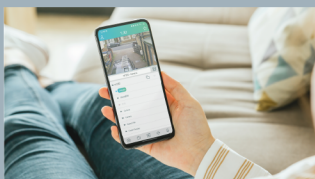
Crowd Density



People counting



Pedestrian & Vehicle Detection



APP Notifications



Face Recognition



NDA (National Defense Authorization Act) compliant, refers to products that are "safe to use" by government agencies and enterprises.

# SR9064N

<b>Resolution</b>	8MP,5MP, 3MP, 2MP (1080P) 1.3MP (960P), 1.0MP (720P)
<b>Inputs</b>	640 Mbps
<b>Out</b>	640 Mbps
<b>SOC</b>	RK3588
<b>Flash</b>	NAND128MB
<b>DDR</b>	LPDDR4 2666 2*16G
<b>Compression</b>	<b>Audio:</b> G.711a <b>Video:</b> H.264/H.265/H.264+/H.265+
<b>Frame rate</b>	<b>4K:</b> 240fps <b>4MP:</b> 480fps <b>2MP:</b> 960fps
<b>Event</b>	MD (Sensitivity Level 1~8) Video loss Beep, Email, Push notification to Mobile APP
<b>Playback function</b>	Fast forward / backward (2x, 4x, 8x,16x) Slow forward (1/2x, 1/4x, 1/8x,1/16x)
<b>Fisheye</b>	Support
<b>Local</b>	U5.0
<b>WEB</b>	IE10/11 Safari V12.1 above Firefox V.52 above Google chrome V.57 above Edge V.79 above
<b>Mobile viewer</b>	SERAGE
<b>Push Notification</b>	TUTK/RS
<b>AI</b>	Face Detection Pedestrian Detection Vehicle Detection People Counting Heat Map Crowd Density Detection Perimeter Intrusion Detection Line Crossing Detection Queue Length Detection License Plate Detection Rare Sound Detection
<b>P/W Reset</b>	<b>Factory Reset:</b> Press 10 seconds
<b>HDMI</b>	4 HDMI (up to 4K), 1 VGA HDMI1 (main out) HDMI2 (spot out) up to 4K up to 36 cameras HDMI3 (spot out) up to 4K up to 36 cameras HDMI4 (spot out) up to 1080p up to 16 cameras
<b>Ethernet</b>	2 RJ45 1000 Base-T
<b>USB</b>	USB2.0*1(front) USB3.0*2(rear)
<b>Audio out</b>	1
<b>E-sata</b>	1
<b>HDD</b>	8 SATA HDD, up to 12TB
<b>RAID</b>	0, 1, 3, 5, 6, 10, JBOD, CLONE for reliable data storage & data loss
<b>Line in</b>	1
<b>RS232</b>	1*RJ45
<b>RS485</b>	1
<b>Alarm Input/out</b>	16in /4out
<b>OSD Language</b>	English/French/Spanish/Portuguese German/Italian/Greek/Danish/Finnish/Russia Hebrew/Turkish/Bulgarian/Arabic/Korean Japanese/Thai/Hindi/Romanian/Dutch/Polish
<b>Dimension (WxDxH)</b>	440*460*89mm
<b>Input Voltage/ Current</b>	ATX 250W
<b>Power consumption</b>	8W
<b>Operating Temperature</b>	-10°C~+50°C (14°F ~ 122°F)
<b>Humidity</b>	Less than 90%RH"